

Operation Martlet

Background

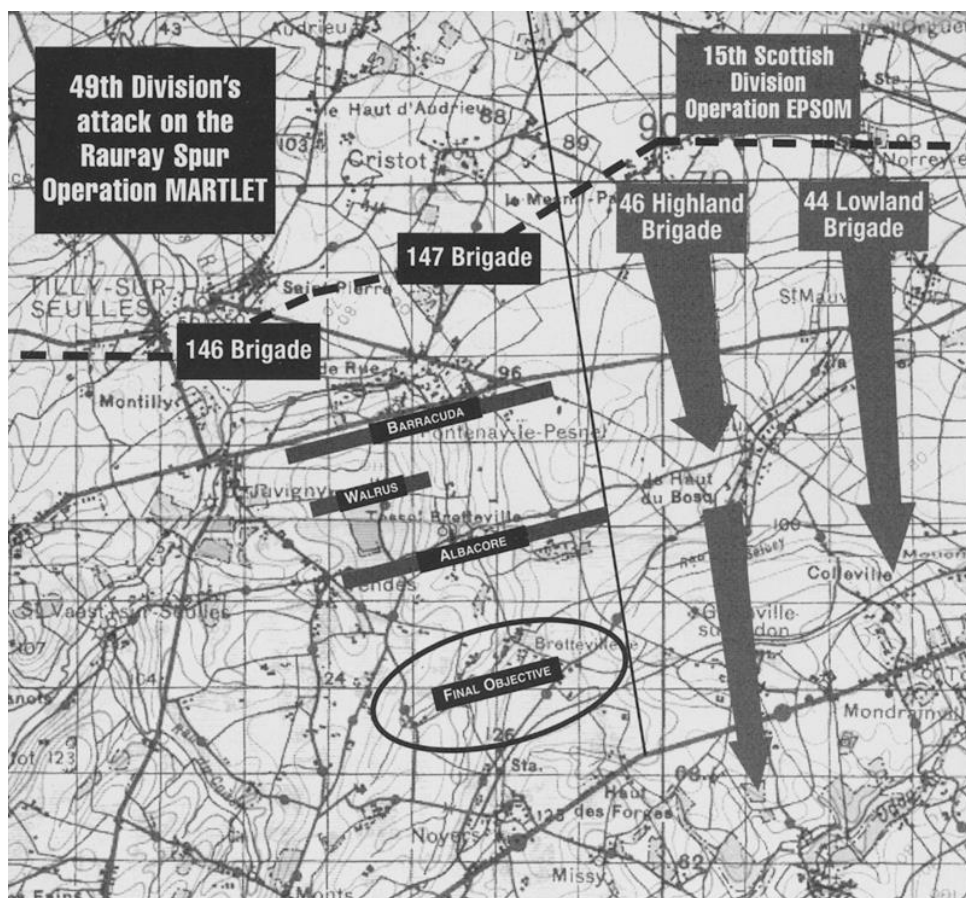
It is the morning of the 25th June 1944. Operation Martlet began yesterday with the initial objective completed by the 146th and 147th Brigade (Polar Bear Division) supported by the 143rd Field Artillery Regiment bombardment and tanks from the 8th Armoured Brigade. The German positions were driven in at every point, and overnight the last remaining troops in Fontenay le Pesnal were cleared out. The Hallams were withdrawn from the front line (it suffered high casualties) and been replaced with the 7th Duke of Wellington and 11th Durham Light Infantry.

Operation Martlet is now in Phase Two, and is to support the upcoming Operation Epsom by engaging and pinning the enemy to the front.

Orders

Kick off 9.30am GMT.

The 7th, Duke of Wellington's Regiment is ordered to capture the two next lines of resistance – WALRUS and ALBACORE, clearing the way for an advance on Rauray. These must be captured by 17:00 GMT



Forces

You are part of the 49th Infantry Division. All forces below can be found in detail in the Battle for Liberation Handbook.

- Company C and D of the 7th Duke Of Wellington (3 platoons each with HQ (with jeep) – approx. 80 figures each)
- In Reserve A and C Companies (3 platoons each with HQ – approx. 60 men each)
- 2nd Kensington's - Carrier platoon – each carrying a Vickers MMG team (4 carriers)
- 55th AT Regiment - One AT Platoon – each towing a 6pdr AT (4 carriers and AT)
- C Squadron of the Sherwood Rangers (4 troops, each of 4 tanks each, incl Sherman VC)
- 1 Forward Observer – radio communication with HQ
- 1 AVRE troop (2 Churchill's with Petards)
- All Platoon Big Men are Level 2, additional Level 1 BM can be rolled for as per IABSM. Company BM is Level 3.

To your right is Tessel Woods. The KOYLI and the 24th Lancers attacked the wood at 6.50am this morning and cleared most of the German defenders. Your flank is secure.

Divisional Support

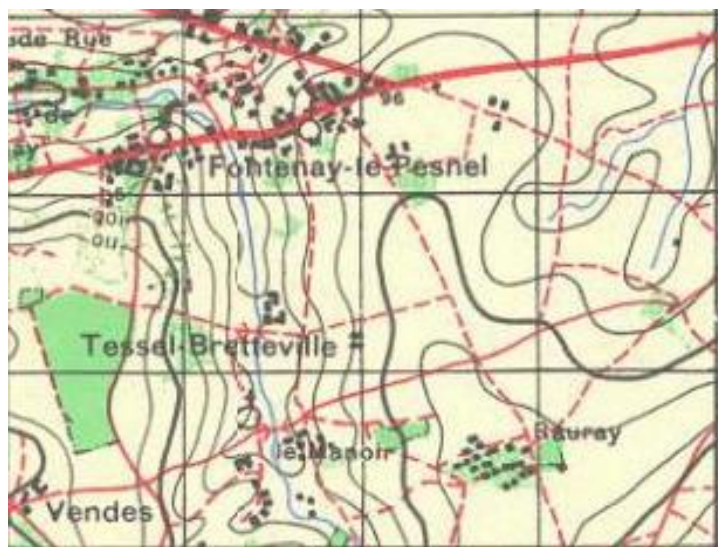
- Brigade COO
- 2 batteries of heavy Mortars
- Aircab – potential air support

Rule notes:

The special rules for 2" mortars and smoke should be used.

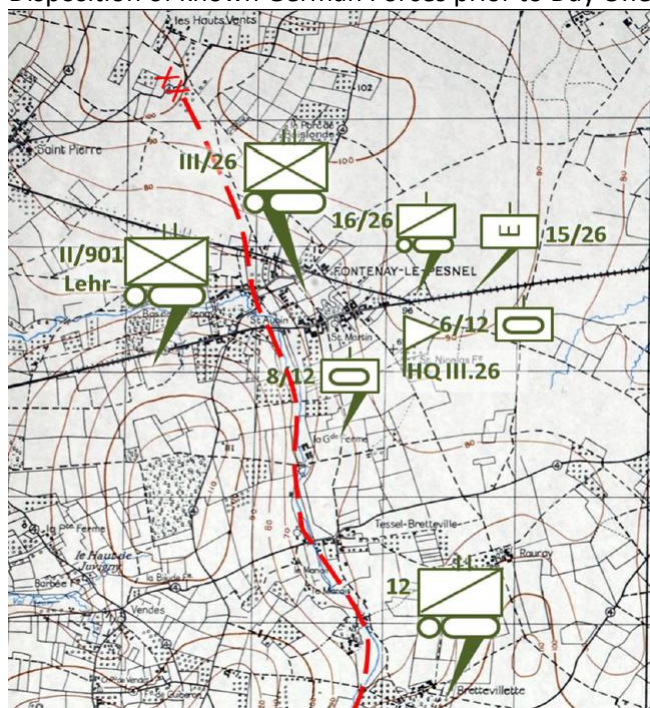
An AVRE, once Fired, takes one whole Turn to reload. A figure should be placed on the model to represent the reloading. This figure can be targeted and if killed the reloading fails. If shocked the reloading is delayed a further turn.

Map of Area of Operation



Intelligence Report – 24th June 1944

Disposition of known German Forces prior to Day One.



From Operation Martlet – Toofatlardies.



Reading:

The Polar Bears – Monty's Left Flank – P. Delaforce

Operation Martlet – CoC – Toofatlardies

Operation Epsom – Battleground Series

Over the Battlefield Operation Epsom – I. Daghish.

